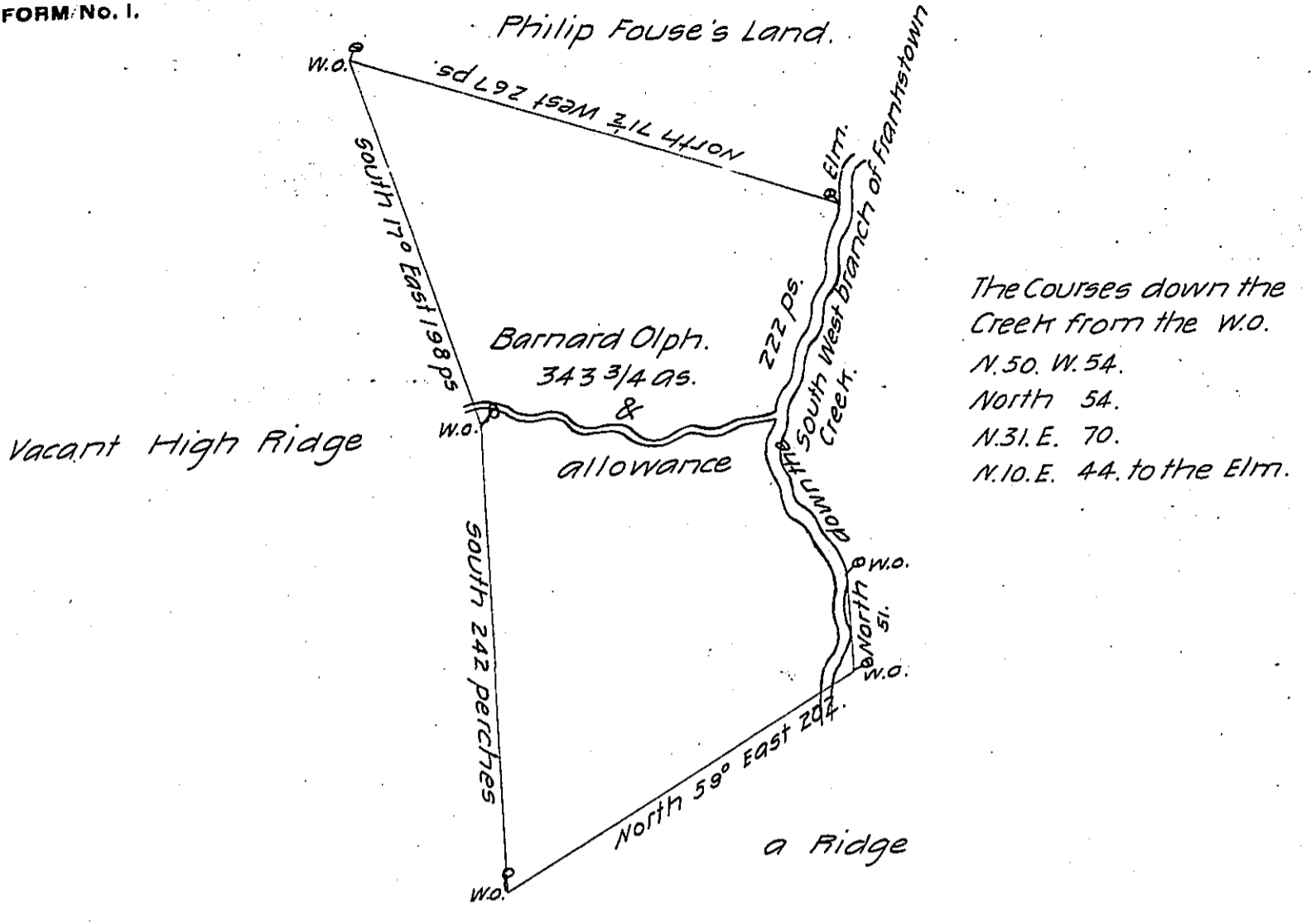


FORM No. 1.



A Draught of a Tract of Land situate on the West side of South West Branch of Frankstown Creek in the County of Cumberland containing Three hundred and forty three acres and three quarters of an acre and the usual allowance of six acres P. Cent. for Roads &c. Surveyed the 22^d day of May 1765 to Barnard Olph in pursuance of a Warrant dated the 31st day of May 1762.

R. Richard Tea Depy Surveyr.

To John Lukens Esqr.
Surveyor General.

IN TESTIMONY that the above is a copy of the original remaining on file in the Department of Internal Affairs of Pennsylvania, made conformably to an Act of Assembly approved the 16th day of February, 1833, I have hereunto set my Hand and caused the Seal of said Department to be affixed at Harrisburg, this ninth day of May 1906.

George B. ...
Secretary of Internal Affairs.